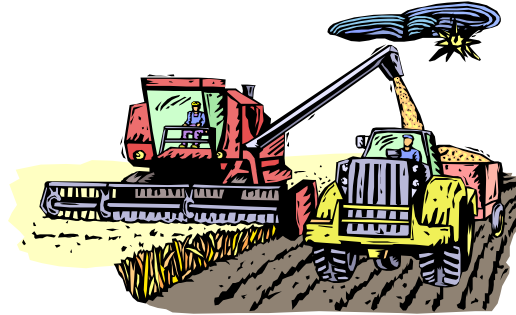


How Michigan Land is Used





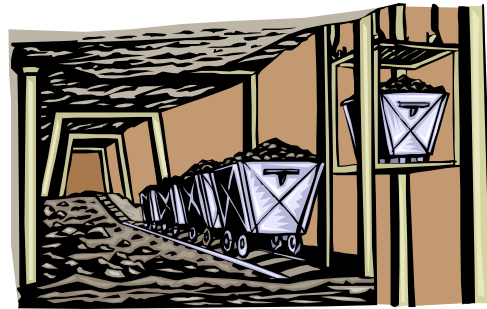
Agriculture (farming)



$\frac{1}{4}$ of Michigan's land is used for farming, mostly in the southern L.P. It has good soil and the longest growing season in MI.

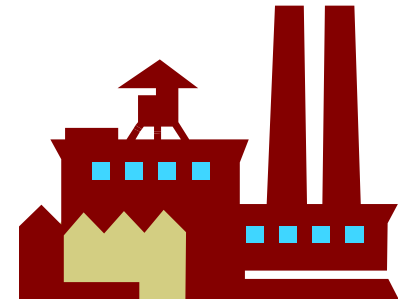
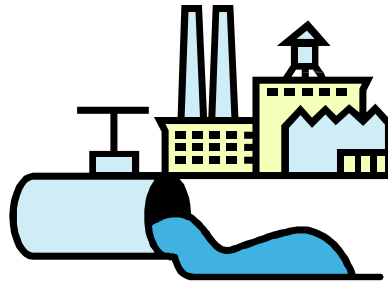


Mining



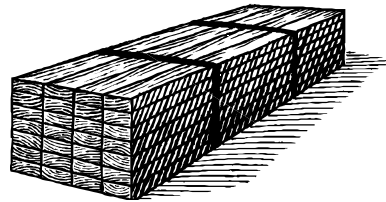
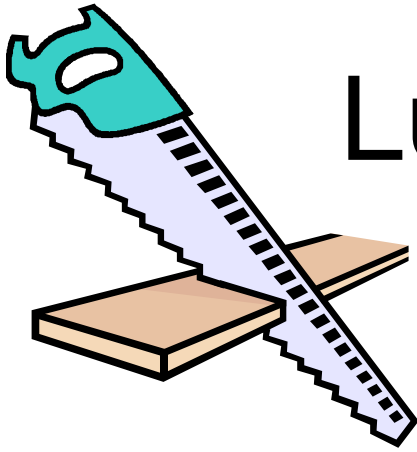
The U.P. has lots of minerals such as iron, copper, limestone, and gypsum.

Manufacturing (factories)

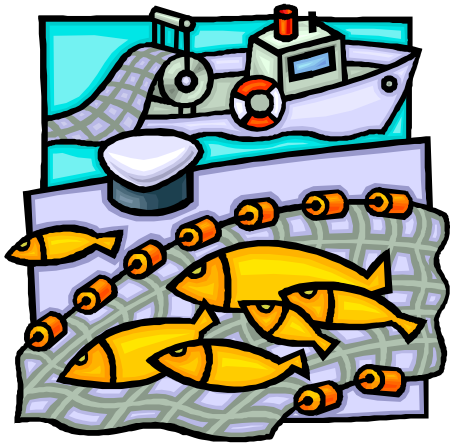


The southern part of the L.P. has lots of factories. They produce cars, furniture, chemicals, paper, and medicine.

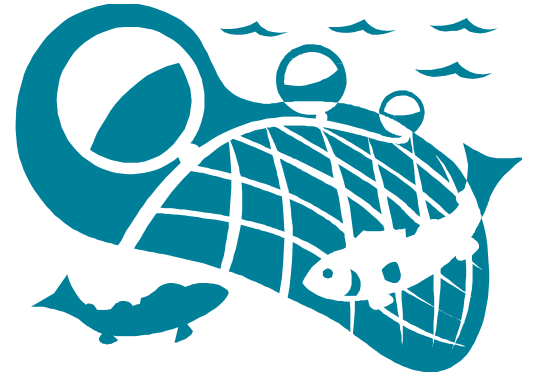
Lumbering (timber/trees)



Michigan has lots of forests. The trees are cut and turned into lumber to make products, and Christmas trees.



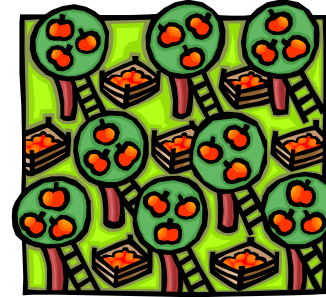
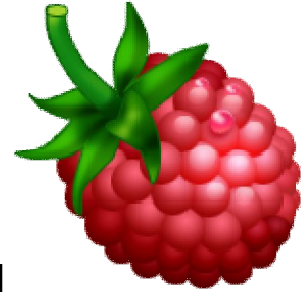
Fishing



The Great Lakes provide lots of fish and a large shipping business.



Berries / Fruit Trees



1/3 of the blueberries in the U.S. are grown in MI, along with many fruit trees such as peaches, pears, apples, and plums.